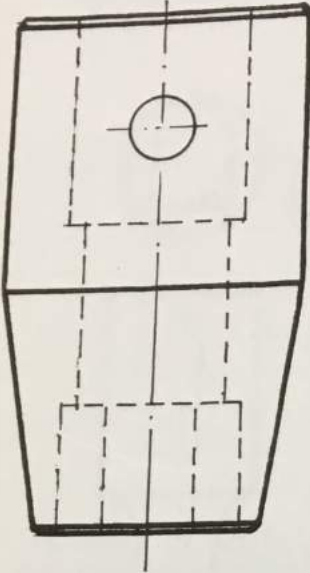


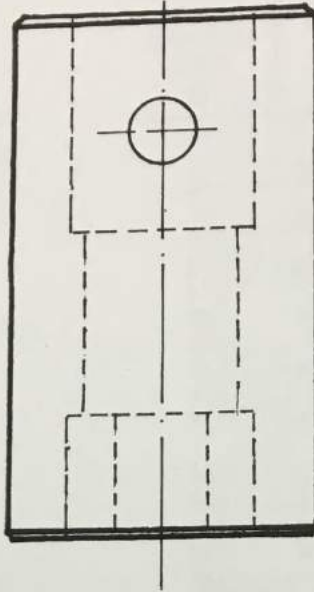
DIAGRAMA CORRESPONDIENTE A LAS PAGINAS 39 HASTA LA 54

TIPO DE BOCAS TUBOS

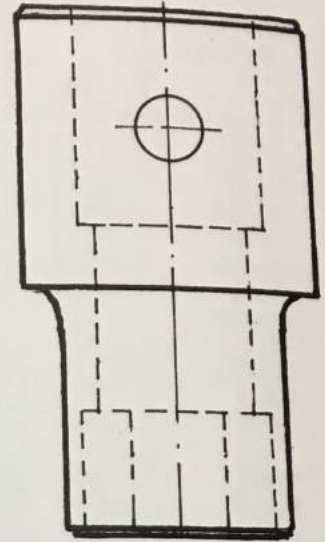
Tipo **A**



Tipo **B**

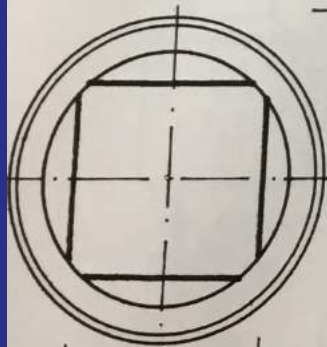


Tipo **C**

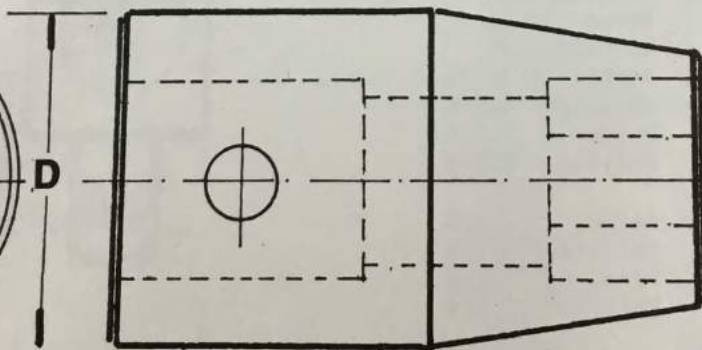


ACOTACIONES

Diámetro Extremo
Encastre



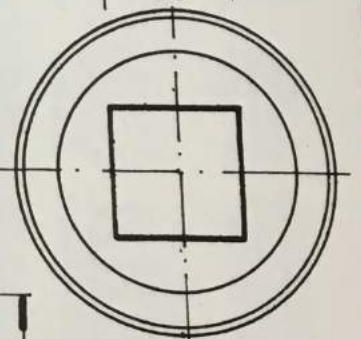
Encastre
Cuadrado



L
Largo Total

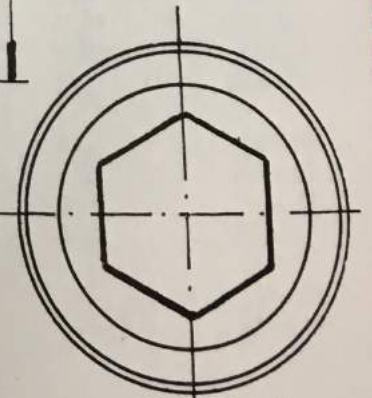
Medida de la Boca

A



Diámetro Extremo
Boca

C



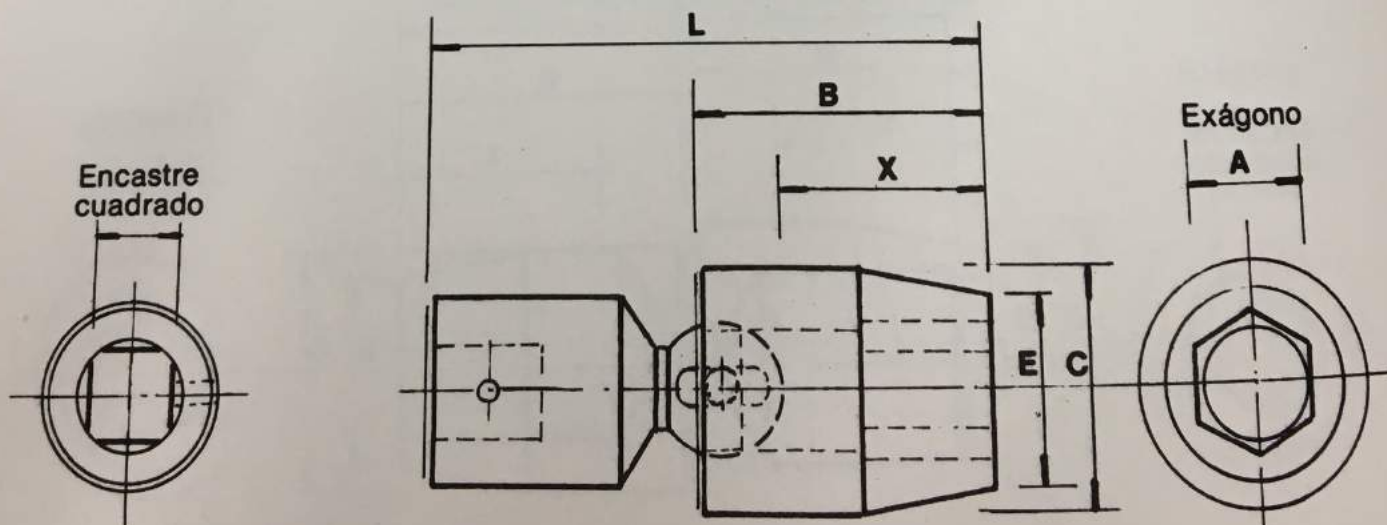
Medida de la Boca

A

BOCAS TUBO CARDAN ESFERICO

Cuadrado hembra:
1/2"

EXAGONO	MEDIDA DE LA BOCA A		LARGO DEL TUBO	DIAMETRO EXTREMO ENCASTRE TUBO	LARGO TOTAL	DIAMETRO EXTREMO BOCA TUBO	PROFUNDIDAD
	PULGADAS	MILIMETROS	B	C	L	E	X
			7/8	7/8	2 . 1/8	9/16	11/32
CE-116	3/8	10	15/16	7/8	2 . 3/16	5/8	13/32
CE-117	7/16	11	15/16	1	2 . 1/4	5/8	3/8
CE-216	7/16	11	1	7/8	2 . 1/4	11/16	15/32
CE-118	1/2	12-13	1	1	2 . 5/16	11/16	7/16
CE-217	1/2	12-13	1	1	2 . 5/16	3/4	17/32
			1 . 1/16	7/8	2 . 7/16	3/4	9/16
CE-119	9/16	14	1 . 1/8	1	2 . 5/8	3/4	1/2
CE-218	9/16	14	1 . 1/4	1.1/4	2 . 5/16	25/32	17/32
CE-300	9/16	14	1 . 1/16	7/8	2 . 7/16	25/32	9/16
CE-120	19/32		1 . 1/8	1	2 . 5/8	25/32	1/2
CE-219	19/32		1 . 1/4	1.1/4	2 . 3/8	7/8	19/32
CE-301	19/32		1 . 1/8	7/8	2 . 1/2	27/32	5/8
			1 . 3/16	1	2 . 5/8	7/8	1/2
CE-121	5/8	15-16	1 . 1/4	1.1/4	2 . 9/16	1	11/16
CE-220	5/8	15-16	1 . 1/4	1	2.11/16	1	9/16
CE-302	5/8	15-16	1 . 1/4	1	2 . 7/8	1.1/16	9/16
CE-221	11/16	17-18	1 . 5/16	1.1/4	2 . 9/16	1.1/8	11/16
CE-303	11/16	17-18	1 . 7/16	1.1/2	2 . 3/4	1.1/32	5/8
CE-400	11/16	17-18	1 . 7/16	1.1/2	3 . 1/16	1.1/8	3/4
			1 . 1/4	1.1/8	2 . 3/4	1.1/8	5/8
CE-222	3/4	19	1 . 3/8	1.1/4	3 . 1/16	1.1/8	3/4
CE-304	3/4	19	1 . 5/8	1.1/2	2 . 3/4	1.1/16	5/8
CE-401	3/4	19	1 . 3/8	1.1/4			
CE-305	25/32						



Angulo máximo de trabajo 35°

BOCAS TUBO - Cortas

 Cuadrado hembra:
3/8"

EXAGONO	TIPO	MEDIDA DE LA BOCA A		LARGO TOTAL	DIAMETROS	
		PULGAS	MILIMETROS		EXTREMO BOCA	EXTREMO ENCASTRE
ARTICULO				L	C	D
1912	B	3/8	10	7/8	41/64	41/64
1913	B	13/32		7/8	21/32	21/32
1914	B	7/16	11	7/8	11/16	11/16
1915	B	15/32		7/8	23/32	23/32
1916	B	1/2	12-13	7/8	3/4	3/4
1917	B	17/32		7/8	13/16	13/16
1918	B	9/16	14	7/8	13/16	13/16
1919	B	19/32		15/16	7/8	7/8
1920	B	5/8	15-16	1	7/8	7/8
1921	B	21/32		1	15/16	15/16
1922	B	11/16	17-18	1	1	1
1924	B	3/4	19	1	1. 1/16	1. 1/16
1926	B	13/16	20-21	1	1. 1/8	1. 1/8
1928	B	7/8	22	1	1. 1/4	1. 1/4

BOCAS TUBO - Standard, largas y extralargas

 Cuadrado hembra :
1/4"

EXAGONO	TIPO	MEDIDA DE LA BOCA		LARGO TOTAL	DIAMETROS	
		A	L		EXTREMO BOCA	EXTREMO ENCASTRE
ARTICULO				PULGADAS	MILIMETROS	L
0006	A	3/16	5	1	3/8	1/2
0007	A	7/32		1	3/8	1/2
0008	A	1/4	6	1	7/16	1/2
0009	A	9/32	7	1	15/32	1/2
0010	B	5/16	8	1	1/2	1/2
0011	B	11/32	9	1	9/16	9/16
0012	B	3/8	10	1	9/16	9/16
0013	B	13/32		1	5/8	5/8
0014	B	7/16	11	1	5/8	5/8
0015	B	15/32		1	11/16	11/16
0016	B	1/2	12-13	1	3/4	3/4
0017	B	17/32		1	3/4	3/4
0018	B	9/16	14	1	13/16	13/16
0019	B	19/32		1	7/8	7/8
0020	B	5/8	15-16	1	7/8	7/8
0106	A	3/16	5	1.3/4	3/8	1/2
0107	A	7/32		1.3/4	3/8	1/2
0108	A	1/4	6	1.3/4	7/16	1/2
0109	A	9/32	7	1.3/4	15/32	1/2
0110	B	5/16	8	1.3/4	1/2	1/2
0111	B	11/32	9	1.3/4	9/16	9/16
0112	B	3/8	10	1.3/4	9/16	9/16
0113	B	13/32		1.3/4	5/8	5/8
0114	B	7/16	11	1.3/4	5/8	5/8
0115	B	15/32		1.3/4	11/16	11/16
0116	B	1/2	12-13	1.3/4	3/4	3/4
0117	B	17/32		1.3/4	3/4	3/4
0118	B	9/16	14	1.3/4	13/16	13/16
0119	B	19/32		2	7/8	7/8
0120	B	5/8	15-16	2	7/8	7/8
0208	A	1/4	6	3	7/16	1/2
0209	A	9/32	7	3	15/32	1/2
0210	B	5/16	8	3	1/2	1/2
0211	B	11/32	9	3	9/16	9/16
0212	B	3/8	10	3	9/16	9/16
0213	B	13/32		3	5/8	5/8
0214	B	7/16	11	3	5/8	5/8
0215	B	15/32		3	11/16	11/16
0216	B	1/2	12-13	3	3/4	3/4
0217	B	17/32		3	3/4	3/4
0218	B	9/16	14	3	13/16	13/16
0219	B	19/32		3	7/8	7/8
0220	B	5/8	15-16	3	7/8	7/8

BOCAS TUBO - Standard

 Cuadrado hembra:
1 1/2"

EXAGONO	MEDIDA DE LA BOCA A		LARGO TOTAL	DIAMETROS	
				EXTREMO BOCA	EXTREMO ENCASTRE
ARTICULO	PULGADAS	MILIMETROS	L	C	D
7040	1.1/4	32	2. 3/4	2. 1/4	3
7042	1.5/16	33-34	2. 3/4	2. 5/16	3
7044	1.3/8	35	2. 3/4	2. 3/8	3
7046	1.7/16	36-37	2. 3/4	2. 7/16	3
7048	1.1/2	38	2. 7/8	2. 1/2	3
7050	1.9/16	39-40	2. 7/8	2. 5/8	3
7052	1.5/8	41-42	3	2. 3/4	3
7054	1.11/16	43	3	2.13/16	3
7056	1.3/4	44-45	3. 1/8	2. 7/8	3
7058	1.13/16	46	3. 1/8	3. 1/8	3
7060	1.7/8	47-48	3. 1/8	3. 1/8	3
7062	1.15/16	49	3. 1/8	3. 1/4	3.1/4
7064	2	50-51	3. 1/4	3. 1/4	3.1/4
7066	2.1/16	52-53	3. 1/4	3. 1/4	3.1/4
7068	2.1/8	54	3. 1/4	3. 1/4	3.1/4
7070	2.3/16	55-56	3. 5/16	3. 1/4	3.1/4
7072	2.1/4	57	3. 5/16	3. 3/8	3.1/4
7074	2.5/16	58-59	3. 3/8	3. 3/8	3.1/4
7076	2.3/8	60-61	3. 7/16	3. 1/2	3.1/4
7078	2.7/16		3. 1/2	3. 1/2	3.1/4
7080	2.1/2		3. 1/2	3. 5/8	3.1/4
7082	2.9/16	65	3. 5/8	3. 3/4	3.1/4
7084	2.5/8		3. 5/8	4	4
7086	2.11/16		3. 5/8	4	4
7088	2.3/4	70	3. 3/4	4. 1/4	4
7090	2.13/16		3. 3/4	4. 1/4	4
7092	2.7/8		3. 3/4	4. 1/2	4
7094	2.15/16		3. 7/8	4. 1/2	4
7096	3	75	3. 7/8	4. 1/2	4
7098	3.1/16		3. 7/8	4. 3/4	4
70100	3.1/8	80	4	4. 3/4	4
70102	3.3/16		4	4. 3/4	4



BOCAS TUBO - Standard							Cuadrado hembra: 1/2"	
EXAGONO	TIPO	MEDIDA DE LA BOCA A		LARGO TOTAL L	DIAMETROS			
ARTICULO		PULGADAS	MILIMETROS		EXTREMO BOCA C	EXTREMO ENCASTRE D		
2008	A	1/4	6	1 .1/2	7/16	7/8		
2009	A	9/32	7	1 .1/2	15/32	7/8		
2010	A	5/16	8	1 .1/2	1/2	7/8		
2011	A	11/32	9	1 .1/2	17/32	7/8		
2012	A	3/8	10	1 .1/2	9/16	7/8		
* 2312	C	3/8	10	1 .1/2	19/32	27/32		
2013	A	13/32		1 .1/2	11/16	7/8		
* 2313	C	13/32		1 .1/2	5/8	27/32		
2014	A	7/16	11	1 .1/2	11/16	7/8		
* 2314	C	7/16	11	1 .1/2	21/32	27/32		
2015	A	15/32		1 .1/2	3/4	7/8		
* 2315	C	15/32		1 .1/2	11/16	27/32		
2016	B	1/2	12-13	1 .1/2	7/8	7/8		
* 2316	C	1/2	12-13	1 .1/2	23/32	27/32		
UQ-235	A	1/2	12-13	1 .1/2	45/64	15/16		
2017	B	17/32		1 .1/2	7/8	7/8		
* 2317	C	17/32		1 .1/2	25/32	27/32		
XZ-8318	B	9/16	14	1 .1/2	7/8	7/8		
2018	B	9/16	14	1 .1/2	15/16	15/16		
* 2318	C	9/16	14	1 .1/2	13/16	27/32		
UQ-236	A	9/16	14	1 .1/2	27/32	15/16		
2019	B	19/32		1 .1/2	15/16	15/16		
UQ-237	A	19/32		1 .1/2	7/8	1		
* 2319	B	19/32		1 .1/2	7/8	7/8		
XZ-5320	B	5/8	15-16	1 .1/2	15/16	15/16		
2020	B	5/8	15-16	1 .1/2	1	1		
* 2320	B	5/8	15-16	1 .1/2	7/8	7/8		
UQ-238	A	5/8	15-16	1 .1/2	15/16	1		
2021	B	21/32		1 .1/2	1	1		
*2321	B	21/32		1 .1/2	29/32	29/32		
2022	B	11/16	17-18	1 .1/2	1 .1/8	1.1/8		
UQ-239	A	11/16	17-18	1 .1/2	1 .1/64	1.1/16		
*XZ-1322	B	11/16	17-18	1 .1/2	1	1		
+ 2322	B	11/16	17-18	1 .1/2	15/16	15/16		
UV-182	B	3/4	19	1 .1/2	1 .1/4	1.1/4		
2024	B	3/4	19	1 .1/2	1 .1/8	1.1/8		
* 2324	B	3/4	19	1 .1/2	1 .1/32	1.1/32		

* Pared fina

+ Pared extra fina